



Citizens of
Colton Joint Unified School District

Board of Education

Superintendent
Frank Miranda, Ed.D.

Sr. Exec. Asst. — Supt./Board
Joanne Medina

Sr. Exec. Asst. — Supt.
Jennifer Wold

Business Services Division
Tina Daigneault
Interim Asst. Superintendent

See Charts B , C, D & E

Educational Services Division
Tina Petersen, Ed.D.
Assistant Superintendent

See Charts F & G

Human Resources Division
Brandon Dade
Assistant Superintendent

See Charts H & I

Student Services Division
Anthony Ortiz, Ph.D.
Assistant Superintendent

See Charts J, K & L

Communications Director
Katie Orloff

Comm. Specialist
Lynette White

Admin. Asst.
Diane Calles

Transl./Recep.
Cynthia Bueno

Transl./Recep.
Abigail Valdez

Transl./Recep.
Adha Velador

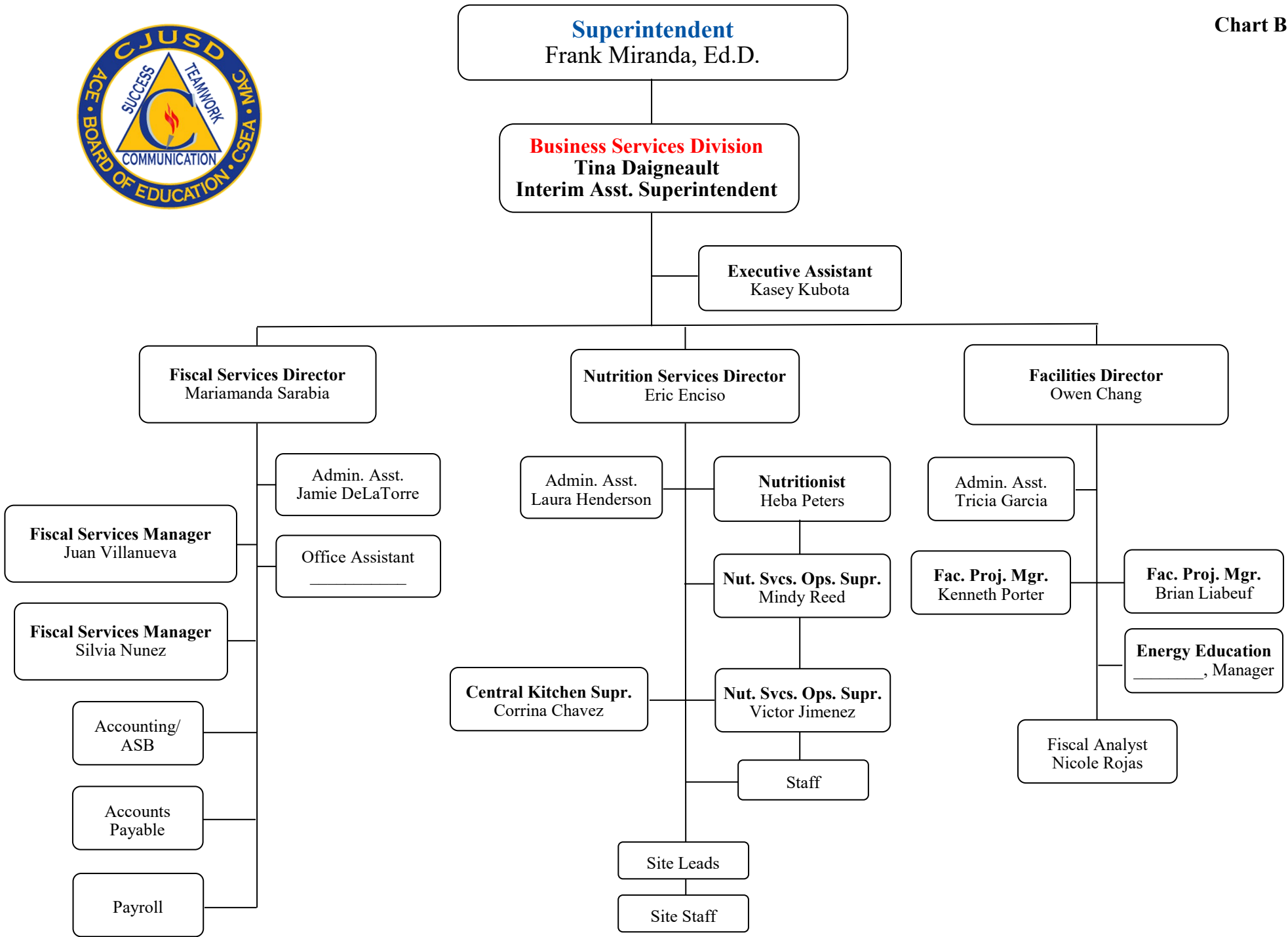
Principals

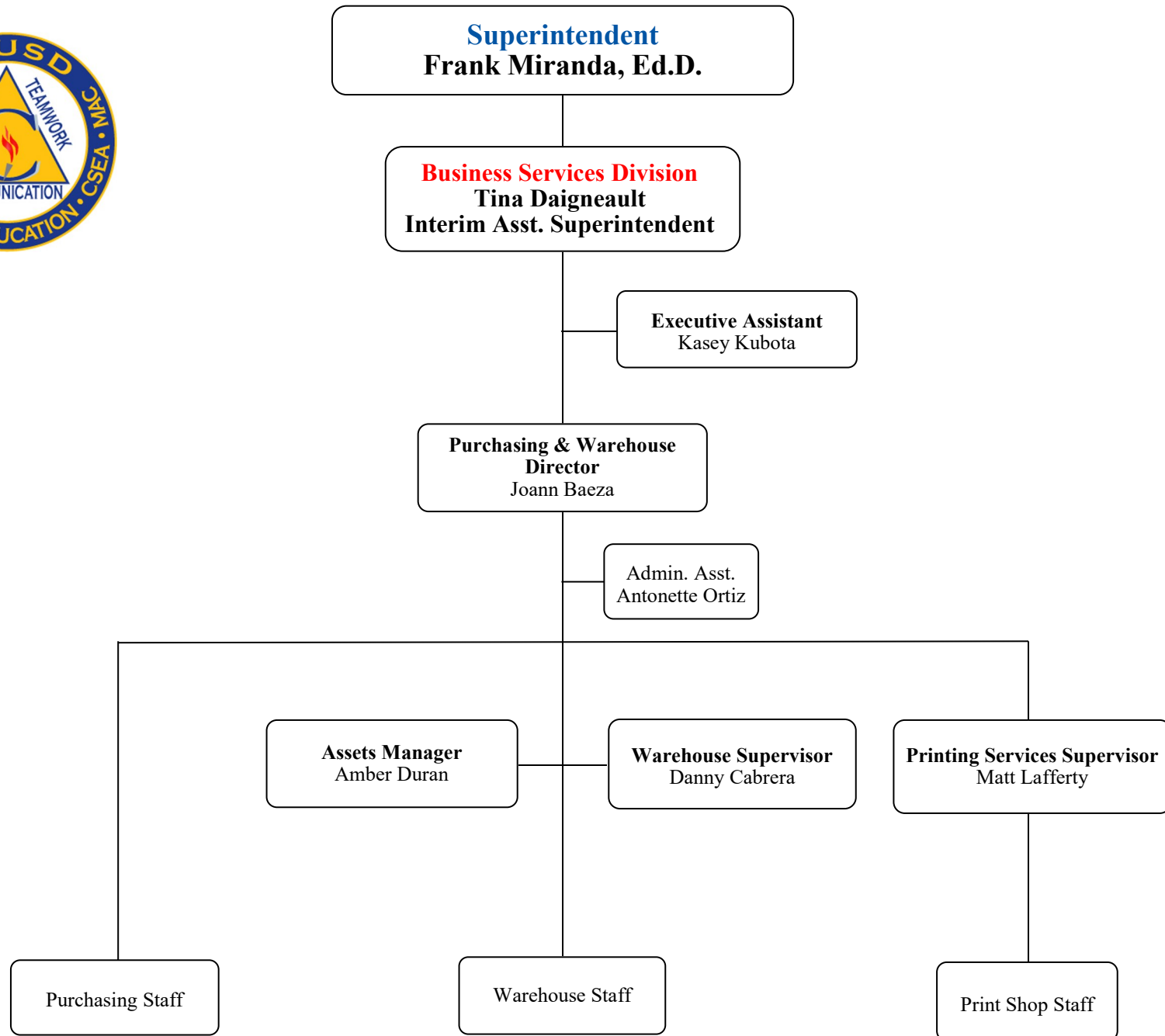
Asst. Principals

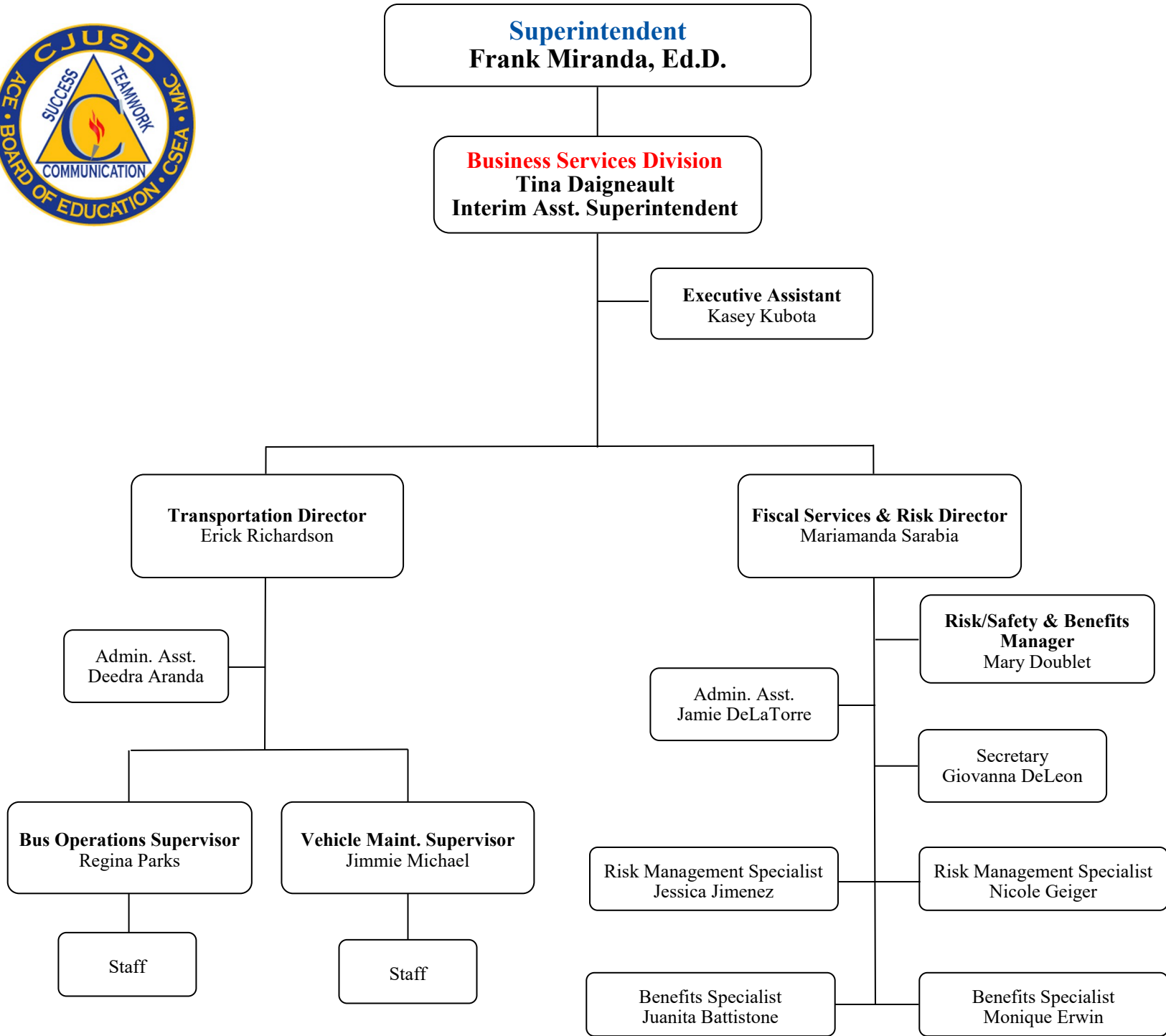
Staffs

Students

Chart B









Superintendent
Frank Miranda, Ed.D.

Business Services Division
Tina Daigneault
Interim Asst. Superintendent

Executive Assistant
Kasey Kubota

Maintenance & Operations
Director
Adriana Castaneda

Admin. Asst.
Sonia Diaz

Maintenance Manager
Dennis Aceves

Operations Manager
Michael Villegas

Maint. Supervisor
John Odenbaugh

Custodian Supervisor
Morena Wolter

Maint. Supervisor
Donald Alexander

Custodian Supervisor
Jose Ruvalcaba

Maint. Supervisor
Harry Arensberg

Custodian Supervisor
Daniel Lopez

Maint. Supervisor
Philip May

Grounds Supervisor
Moises Rodriguez

Secretary
Cory Ramirez

Staff

Staff

Staff

Staff

Staff

Staff

Staff

Staff



Superintendent
Frank Miranda, Ed.D.

Educational Services Division
Tina Petersen, Ed.D.
Assistant Superintendent

Executive Assistant
Christie Snowden

School Improvement & Accountability Director
Joda Murphy

Chief Technology Officer
Jamal Boyce

ASES Grant Manager
Ron Perez

Family Involvement Prog. Manager
Alejandra DelaTorre

Admin. Asst.
Linda Jimenez

Fiscal Analyst
Cecilia Morales

Secretary
Nancy Cosio

Network Services Manager
Steven Nadziejko

Information Services Manager
Christian Arroyo

Admin. Asst.
Monica Mendoza

Staff



Superintendent
Frank Miranda, Ed.D.

Educational Services Division
Tina Petersen, Ed. D.
Assistant Superintendent

Executive Assistant
Christie Snowden

Educational Services, TK-6/GATE Director
Syed Hyder, Ed.D.

Language Support Services Director

Educational Services, 7-12 Director
Eric Mooney, Ed. D.

Data & Assessment Coord.
Robin Urquhart

Family Involvement Prog. Mgr.
Alejandra DelaTorre

Admin. Asst.
Michelle Ponce

Staff

Child Development Director
(Hd. Start/Children's Center/State Preschool)
Melissa Williamson

Child Development Supervisor
Mariana Mitroi

Child Development Supervisor
Leah Luptak

Admin. Asst.
Anna Klapproth

Staff

Admin. Asst.
Nereyda Guerra

Language
Assessment
Center

Staff

Admin. Asst.
Nancy Fierro

Secondary
Counselors

Staff

Testing & Data Coordinator
Kiela Jimenez, Ed.D.

Work Based
Learning Technician



Chart H

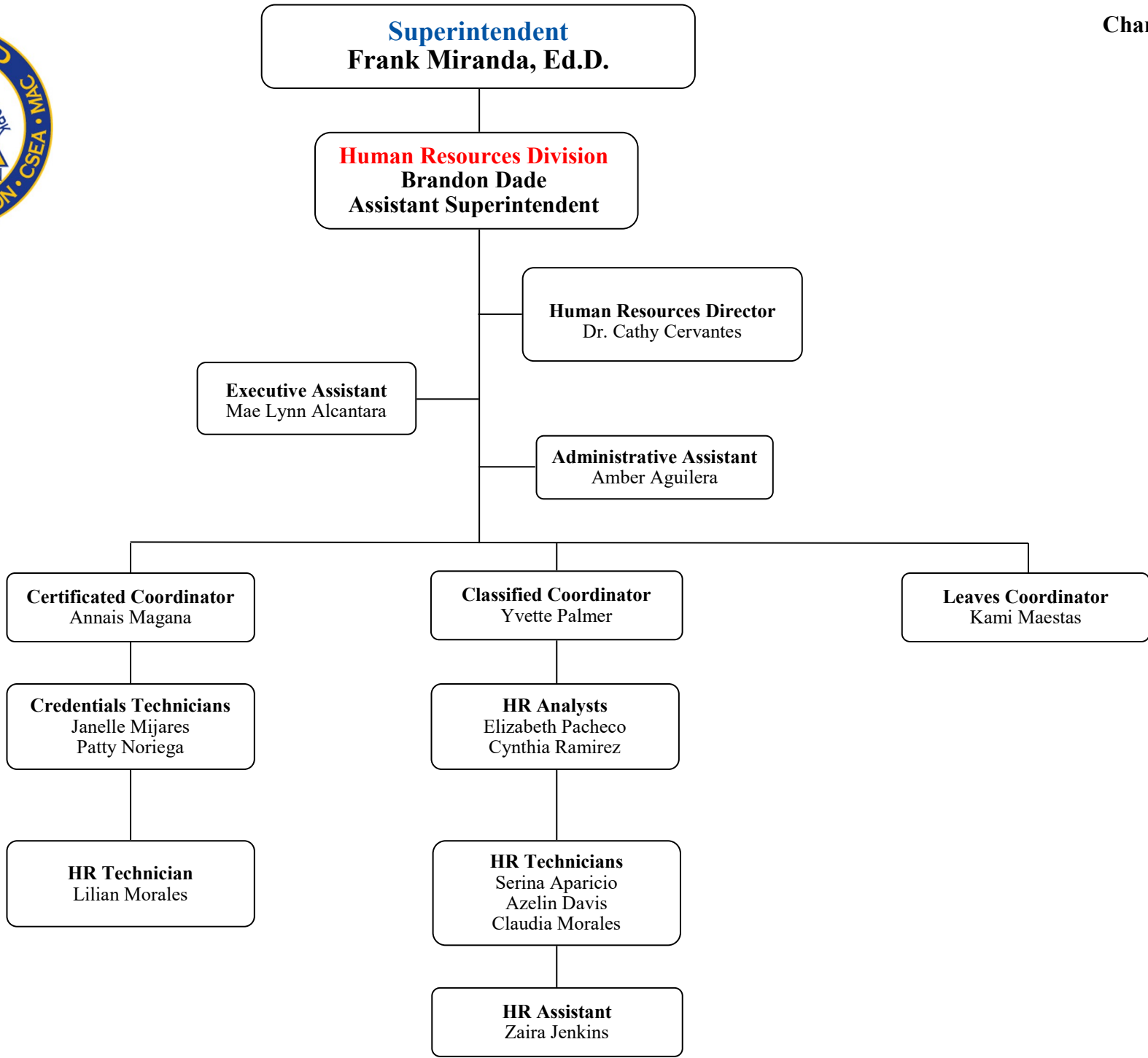
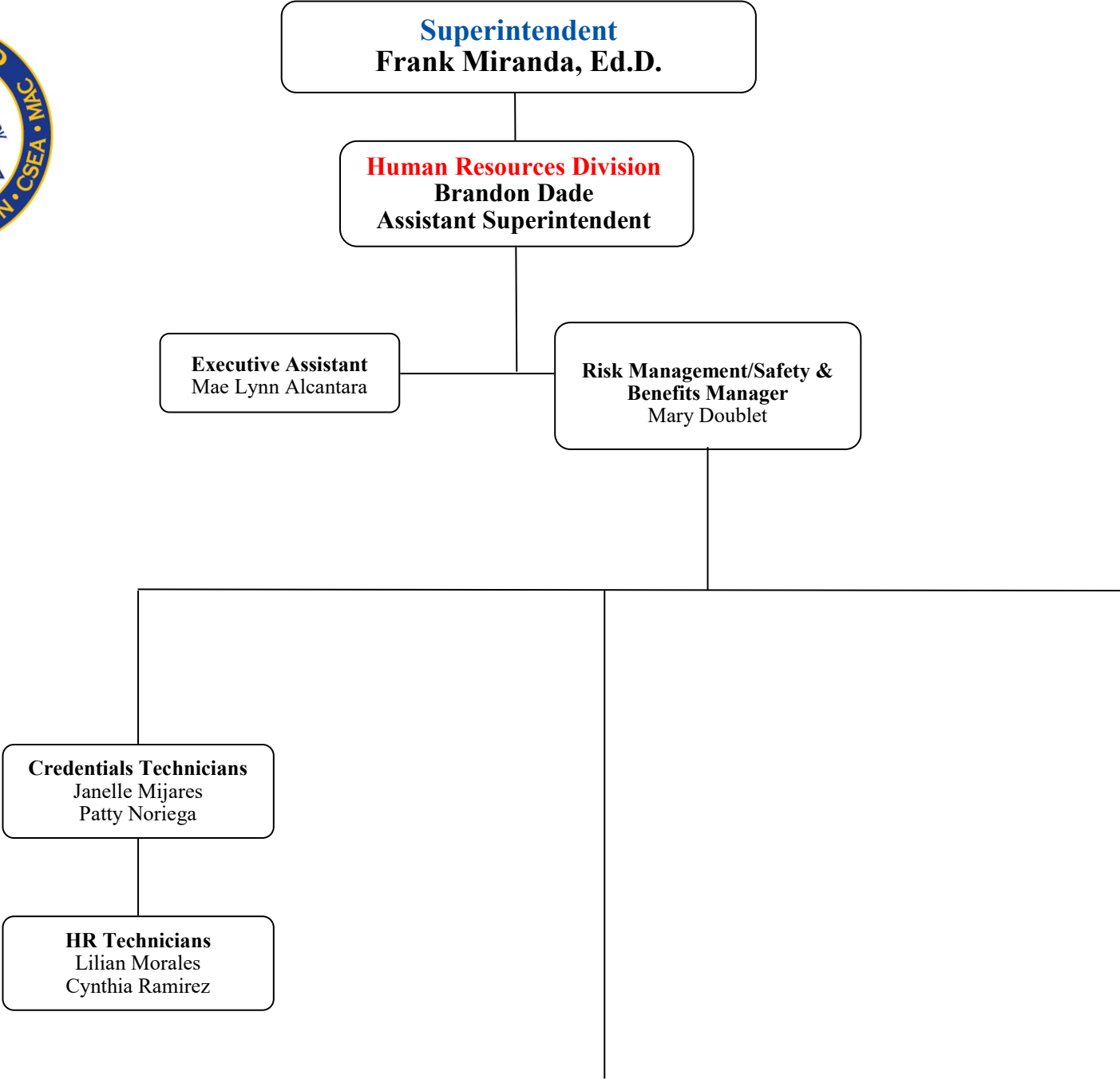
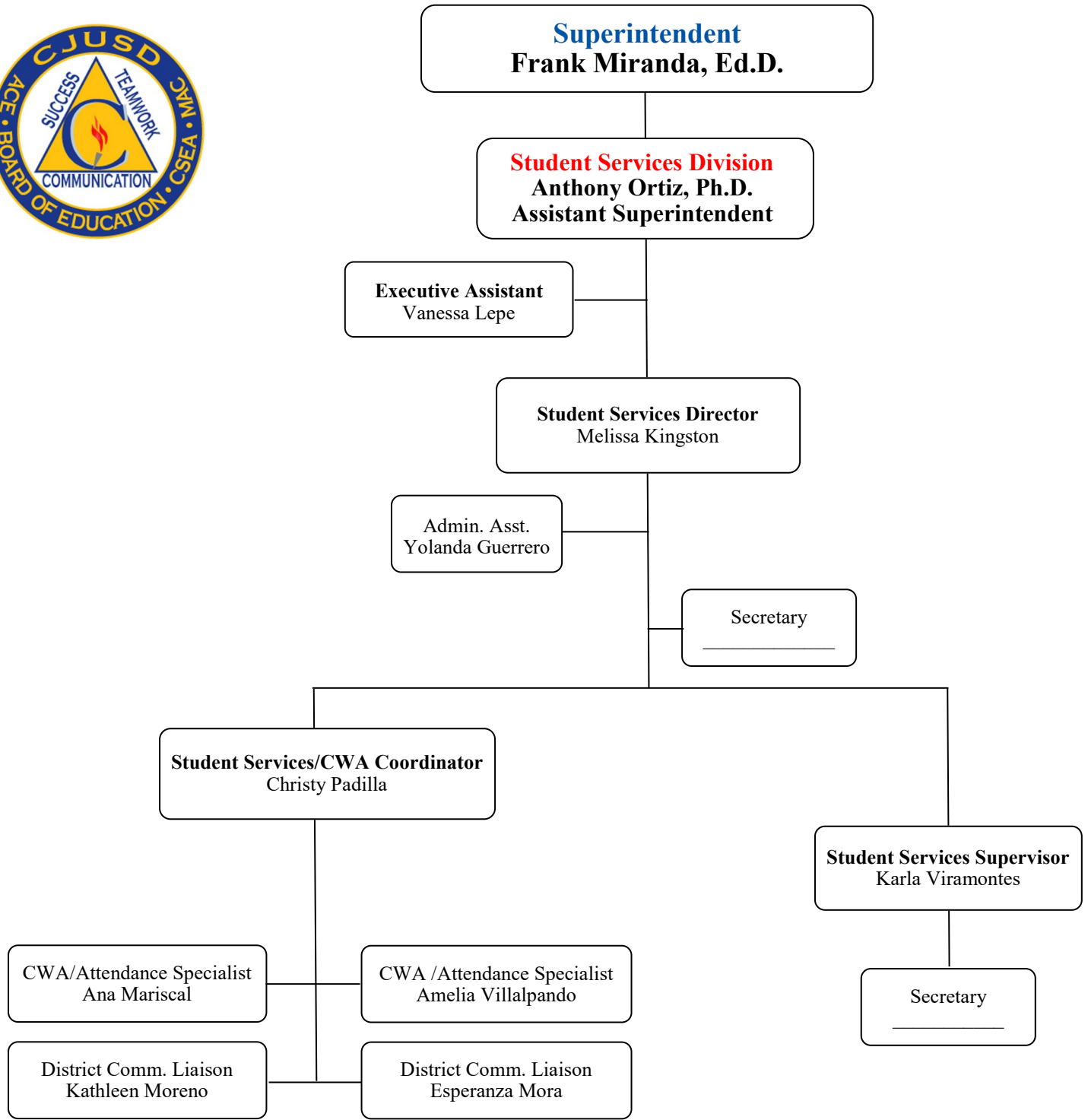




Chart I







Superintendent
Frank Miranda, Ed.D.

Student Services Division
Anthony Ortiz, Ph.D.
Assistant Superintendent

Executive Assistant
Vanessa Lepe

**Behavioral &
Mental Health Manager**
Antonio Castro

Clinical Therapist
Leslie Maldonado

Safety & Security Director
John Sachs

Admin. Asst.
Angie Arias

**Security Supervisor
Colton Area**
Shawn Campa

**Security Supervisor
Bloomington Area**
Frankie Maestas

**Security Supervisor
Grand Terrace Area**
Jose Arnold Yzaguirre

Staff

Adult Education Principal
Brian Pope

School Admin. Asst. I
Maria Felix

Alternative
Education Programs



Superintendent
Frank Miranda, Ed.D.

Student Services Division
Anthony Ortiz, Ph.D.
Assistant Superintendent

Executive Assistant
Vanessa Lepe

Pupil Personnel Services Director
Rob Pearson

Admin. Asst.
Julie Rocha

Curriculum
Program Specialist

ERMHS
Counselors

Psychologists

Special Education Coordinator
Kathy Walck

Speech Therapists

Adaptive P.E.

Trans//Workability Program

Pupil Personnel Office Supervisor
Susan Lake

Special Education Technicians

Office Assistants

Translators

Records Technician

PPS Bilingual Technician

Dist. Ofc. Machine Technician

Special Education Coordinator
Regina Clausell

Nurses

Itinerant RSP

Health Assistants

Special Education
San Salvador